

# PALADINO

---

A *Suited*  
APPROACH

# OFFICINE PALADINO

*A Suited* APPROACH

---

MADE IN ITALY • OFFICINEPALADINO.COM



# EVERYTHING STARTS WITH THE FABRIC

Officine Paladino is a purveyor of exquisite fabric for the modern gentleman. In our latest offering, discover ENZO, a collection of fancy and classic suiting, LUNA, an evergreen tuxedo range and Mondo, our staple offering of plains in a variety of qualities.

A *Suited Approach* complements classic and essential suiting with a more contemporary range of designs, many of which have been exclusively commissioned. Fabrics have been curated to ensure comfort versatility and timeliness regardless of the season or occasion, whilst staying at the forefront of the latest trends. Quality is assured with our fabrics woven exclusively from the best mills in Italy.

We continue to showcase our collection with a selection of looks and styles. Use the *Styling Tool* at OfficinePaladino.com to create your own looks from different parts of the collection and realize them with your trusted sartorial partners.

THIS IS YOUR MOMENT,  
MADE TO MEASURE



## ENZO

A collection of fancy and classic suiting in premium Super 120s & Super 130s Merino wool. It ranges from our interpretation of the classics, such as Birdseye and Sharkskin, to a more contemporary range of Check, Windowpane and Glen Plaid designs. Push the boundaries of performance and style with the famous namesake that inspired the collection.

Suitable for    Page 4 to 25

## LUNA

A classic tuxedo is a must have in every gentleman's closet. We have curated a faille weave quality to allow for the perfect drape for that special occasion. Selectively available in the classics – White, Navy and Deep Black.

Suitable for    Page 26 to 27



## MONDO

A selection of timeless essentials with a splash of fun and color. The collection is varied in composition and includes wool, wool with kid mohair, and a luxurious Super 150s premium range.

Suitable for    Page 28 to 33



ENZO

SUPER 130'S WOOL / 260GMS



**MODENA**  
OP2010



**GRID**  
OP2013



**SHADOW PANE**  
OP2021



**BLUE BLOOD**  
OP2005

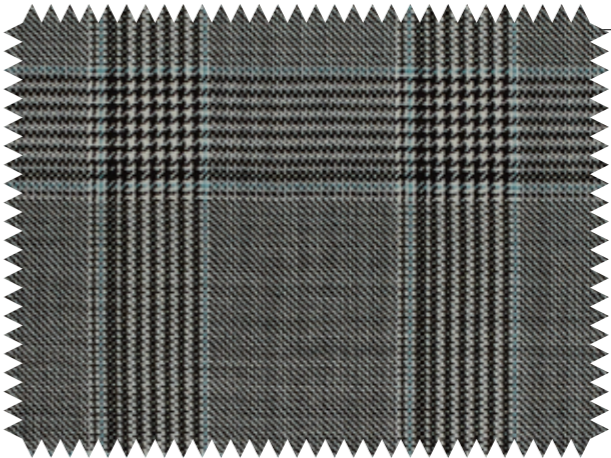
German prefers **ENZO Modena**  
out in a classic silhouette

Suitable for 



ENZO

SUPER 130'S WOOL / 260GMS



HELIO  
OP2012



AREZZO  
OP2011



PURPLE RAIN  
OP2009

German styles down his  
3 piece **ENZO Helio**

Suitable for





ENZO

SUPER 130'S WOOL / 260GMS



BLUE HAZE  
OP2001



MIST  
OP2000



MAYA  
OP2003



THUNDER  
OP2002

ENZO Blue Haze out in a classic  
double breasted style

Suitable for





German wears a high cut double breasted suit from **ENZO Denzel**

ENZO

SUPER 130'S WOOL / 260GMS



**DENZEL**  
OP2008



**RAPIDS**  
OP2007



**YALE**  
OP2017



**PRINCE**  
OP2018

10

11

Suitable for





LAUREL  
OP2020



RAKE  
OP2006



UMBER  
OP2019



CAROLINA  
OP2004

Suitable for



12

13



German styles his **ENZO**  
*Laurel* suit with patch  
pockets and tab lapel  
for versatility



14

15

**ENZO Trout** cut as a 3 piece  
suit with a double breasted  
vest for a more formal look

ENZO

SUPER 130'S WOOL / 260GMS



**TAWNY**  
OP2016



**TROUT**  
OP2014



**EGYPTIAN**  
OP2015

Suitable for





German wears a broad  
Herringbone suit  
from **ENZO Russet**

ENZO

SUPER 120'S WOOL / 270GMS

16

17



**RUSSET**  
OP2043



**TURKISH**  
OP2042



**OIDER BONE**  
OP2044

Suitable for





German sports a more casual look with jacket and drawstring pants from **ENZO Brunello**

ENZO

SUPER 120'S WOOL / 270GMS



**BRUNELLO**  
OP2040



**TUSCANY**  
OP2041



**ORISP**  
OP2033



**GALAXY**  
OP2034

Suitable for





ENZO

SUPER 120'S WOOL / 270GMS

20

21



HARBOR GREY  
OP2035

IRON  
OP2036



VOYAGE  
OP2039

TROMBONE  
OP2037

TURIN  
OP2038

A Havana styled look with  
ENZO Harbor Grey

Suitable for

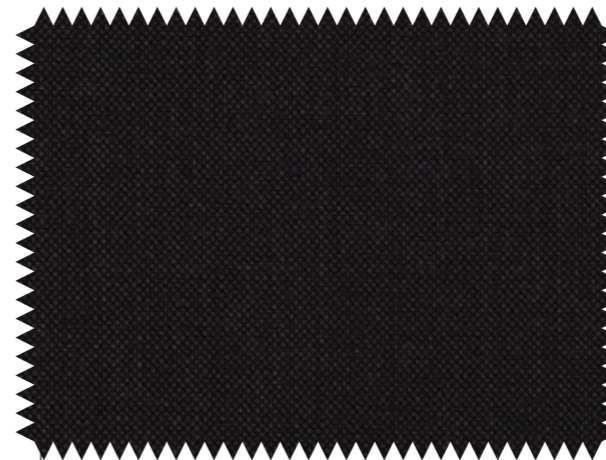




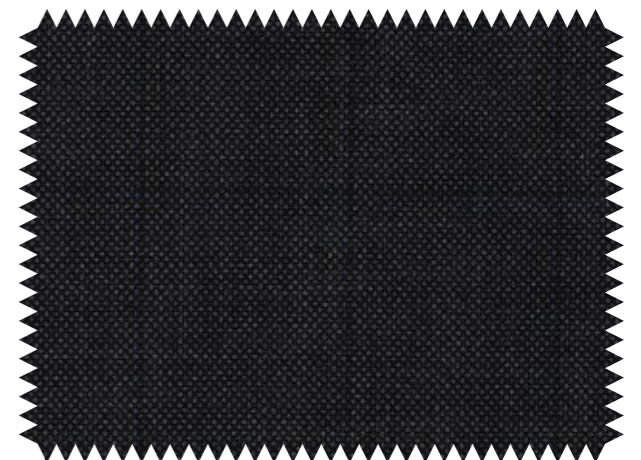
**ENZO Thornbill** is a  
birdseye with a twist  
in a unique color

ENZO

SUPER 120'S WOOL / 270GMS



**THRONBILL**  
OP2030



**CROW**  
OP2049



**SPARROW**  
OP2031



**ROBIN**  
OP2032

23

Suitable for





PEOAN  
OP2048



RHINO  
OP2045



CYBER  
OP2047



HICKORY  
OP2046

Suitable for



24

25



German wears a  
3 piece Glen Plaid  
suit from **ENZO**  
*Hickory*



LUNA

LUXURY WOOL / 320GMS

26

27



BIANCO  
OP2050



NAVY  
OP2051



DEEP BLACK  
OP2052

LUNA Bianco tuxedo jacket  
and LUNA Deep Black pants

Suitable for





IMPERIAL BLUE  
OP1827

ADMIRAL BLUE  
OP1826

PEWTER BLACK  
OP1828

CHARRED GREY  
OP1829

MIDNIGHT BLACK  
OP1825

28

29



German wears a classic combination of **MONDO Imperial Blue** jacket and **MONDO Pewter Grey** pants

Suitable for





German wears a **MONDO**  
*Tidal Blue* suit

## MONDO

WOOL & KID MOHAIR / 270GMS

30

31



**REBEL RED**  
OP1823

**ARTISAN**  
OP1822

**TIDAL BLUE**  
OP1824

**SMOKE GREY**  
OP1821

**ULTRAMARINE**  
OP1820

**DARK BLUE**  
OP1819

**SPACE**  
OP1818

**PHANTOM BLACK**  
OP1817



Suitable for





**PEARL**  
OP1810

**BIEGE**  
OP1809

**SADDLE**  
OP1806

**CLOAK**  
OP1805



**BURGUNDY**  
OP1807

**KLIEN BLUE**  
OP1804

**MERCURY BLUE**  
OP1801

**VICTORY BLUE**  
OP1812

32

33



**CLOUD GREY**  
OP1816

**LEAD**  
OP1815

**PISTOL GREY**  
OP1814

**ASH GREY**  
OP1813



**NAVY BLUE**  
OP1802

**STEEL BLUE**  
OP1803

**MIDNIGHT BLUE**  
OP1811

**ONYX BLACK**  
OP1800

Suitable for





AFTER CARE  
INSTRUCTIONS

Do not wash  
Do not tumble dry  
Do not bleach  
Maximum temperature 150°C / 300°F  
Any solvent except tetrachlorethylene



COLLECTION	COMPOSITION	WEIGHT (GMS)	PAGE
ENZO	Super 130's Wool	260	4—15
ENZO	Super 120's Wool	270	16—25
LUNA	100% Wool	320	26—27
MONDO	Super 150's Wool	280	28—29
MONDO	82% Wool, 18% Wool Mohair	270	30—31
MONDO	100% Wool	270	32—33

View the complete collection and create  
your own pairings at **OFFICINEPALADINO.COM**



